



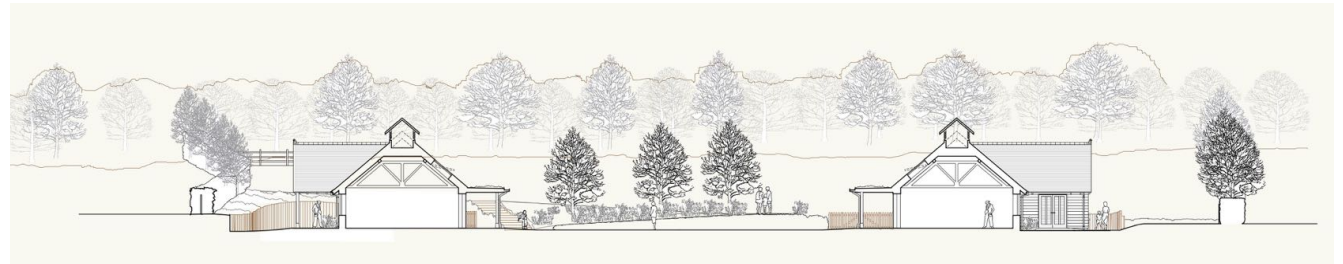
A selection of some of our relevant school projects
NICHOLS BROWN WEBBER LLP ARCHITECTS AND LANDSCAPE PLANNERS

Moulsford Preparatory School has recently obtained planning permission for a new standalone Pre Preparatory school on a green field site adjacent to the main school. The new building will accommodate several new classrooms, a large multi purpose hall, staff facilities and a library. The site lies within the Chilterns Area of Outstanding Natural Beauty and the building was designed as a single storey low key barn-like structure. There will be extensive new landscaping and the building will be naturally vented and heated by air source heat pumps powered by solar panels.

(1) Planning section drawing of the scheme. The building is set down within the existing slope to conceal the bulk of the building within the wider landscape. Classrooms have vaulted ceilings exposing the timber trusses supporting the roof structure.

(2) Plan detail showing the proposed building wrapping around an internal courtyard. A covered verandah links all the classrooms that open out onto the sheltered play area.

(3) Artists impression showing an aerial view of the completed building. The building was conceived as a Chilterns Farmyard nestled into the landscape.



1



3



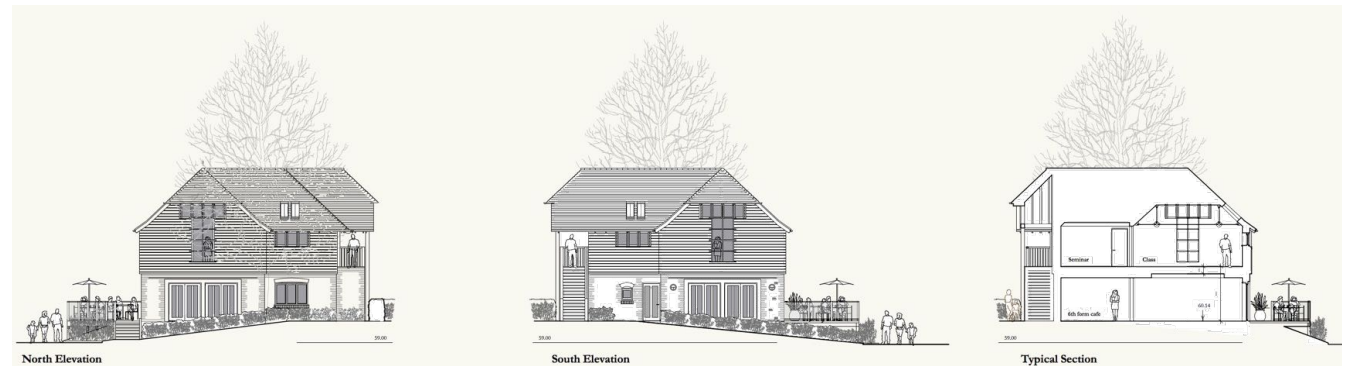
2

We have recently completed another new building for Shiplake College. The ground floor houses a small 6th Form cafe and servery which opens out onto a sunny deck. Upstairs are two classrooms and two small seminar rooms accessed via an external stair under an oak framed roof. The building was designed to be timeless and nestle into the surroundings hence the careful choice of materials and detailing such as dark stained timber weatherboarding, flint brick and clay plain tiles.

(1) Planning drawings of the original scheme. The scheme had to be very sympathetic to its surrounding listed buildings such as the Water Tower and Skipwith House (which is the main school building).

(2) View down the main driveway as you enter the site with the listed flint and brick Victorian water tower in the background to the right.

(3) View up the main driveway looking out from the entrance of the award winning Art Music and Resource Centre towards the new cafe building. Existing Burr house is to the left.



1



2



3

Shiplake College has always had a strong rowing community and has produced no less than four Olympic medal winners in rowing in recent years. For decades the College had operated rowing out of tired timber boat sheds and this will change with the newly handed over facilities. Apart from rowing boat storage, the new building includes a state of the art multi purpose fitness and conditioning area, bar facilities & changing rooms. The first floor will also have a rifle and archery shooting range, an indoor climbing wall and equipment storage for outdoor pursuits for the popular Duke of Edinburgh award scheme.

(1) Planning visual of the original scheme which retained the Victorian boat house on the river but replaced a series of 1960's sheds and buildings set back in a former chalk quarry.

(2) View of the completed interior of the boat house on the ground floor. The building is designed to flood. A comprehensive Flood Risk Assessment was essential to obtain planning permission in difficult circumstances.

(3) Artist's impression of the Boat house showing the river frontage. The first floor south facing balcony which is accessed from the large multi use area commands magnificent views over the River Thames.



2



1



3



1

We recently completed Phase 1 of a Performing Arts Centre for this private girl's school. It provides a state of the art 278 seater studio style auditorium together with a new 6th form cafe and multi purpose foyers. Phase 2 will provide 2 large drama studios and green rooms. Construction was mainly a timber glulam frame and the project achieved a BREEAM 'Very good' rating.

1 Computer generated view from the playing fields

2 Entrance Foyer/6th form Cafe

3 Upper foyer/Dance studio

4 Ground floor Foyer/cafe showing the servery

5 View from the stage in proscenium arch format

6 External view looking towards the entrance foyer



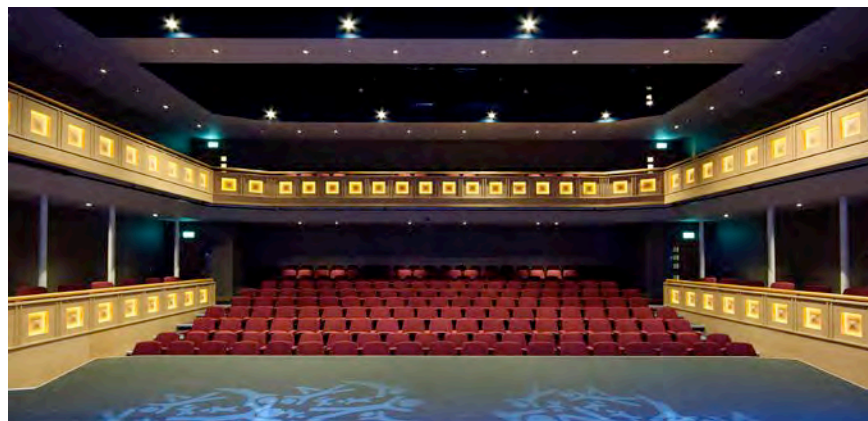
2



3



4



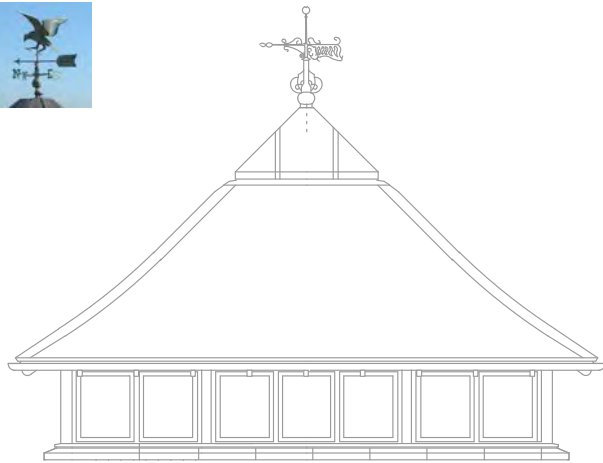
5



6

PIPERS CORNER SCHOOL NEW CLASSROOM BLOCK

NICHOLS | BROWN | WEBBER ARCHITECTS & LANDSCAPE PLANNERS



In 2002 we won a competition to design a large classroom block for this Independent Boarding and Day School for girls aged 4 to 18.

The winning design extended the present classroom buildings to form a three sided sheltered courtyard with magnificent views over the Chilterns.

The scheme was built in 3 phases and the first phase of ten classrooms in a new wing was completed in the Summer of 2004.

- 1 Plan of the sheltered courtyard.
- 2 A cloister runs along the side of the courtyard and gives sheltered access to classrooms.
- 3 The classrooms enjoy views over the Chilterns and abundant natural light.
- 4 One of the NBW design drawings used to evolve the building with the client.
- 5,6 The finished building sits easily with its neighbours.



1



2



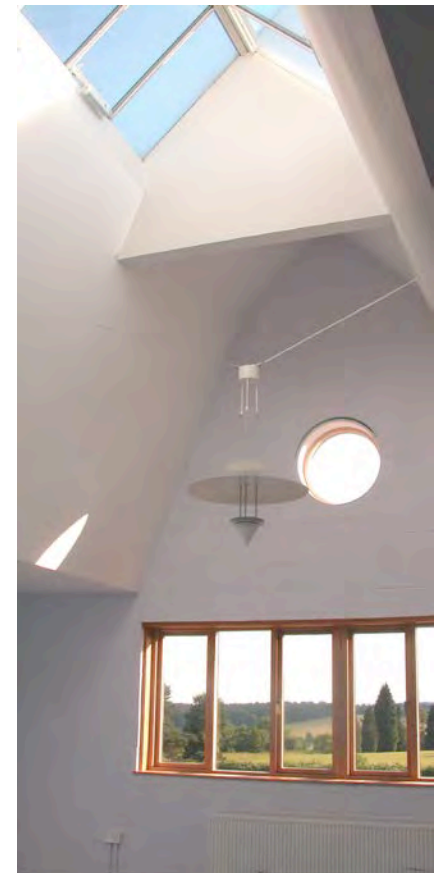
5



6



4



3



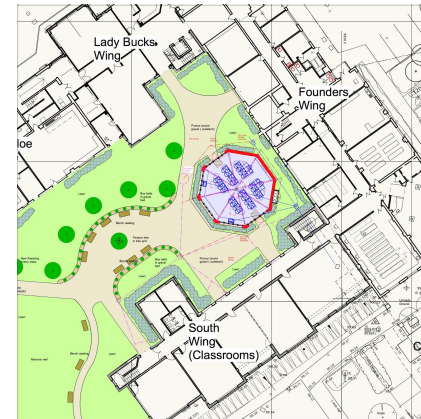
1

This free standing Science Laboratory within the main teaching courtyard needed to be an inspirational place for the girls to be taught the Sciences.

- 1 Internal view of the completed laboratory with clean and bright finishes
- 2 View from adjacent classrooms showing the green sedum roof and prepatinated zinc roof eaves and turret detailing
- 3 Plan of the courtyard showing the new octagonal building set in a newly landscaped courtyard
- 4 Due to the difficulty of building right at the centre of the school a highly insulated Structurally Insulated Panel (SIP) system was adopted that could easily be craned in. These panels were then clad insitu with Western Red Cedar weatherboarding.
- 5 Planning drawing showing the new laboratory in context
- 6 View from the west of the courtyard showing the sedum roof in winter
- 7 Internal view of the completed laboratory with the vaulted ceiling. The building is naturally ventilated with the use of roof mounted passive stack ventilators



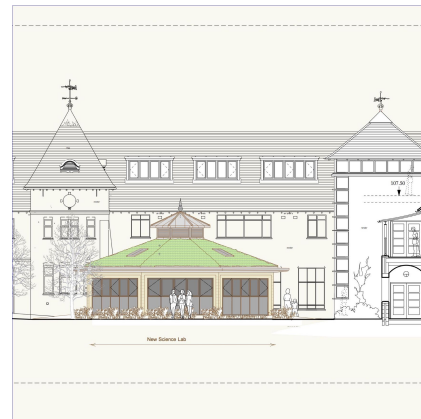
2



3



4



5



6



7

This project involved the conversion of former drama and dance studios in a 1990's building. Structural spine walls were removed and the internal space opened up to form a double aspect library providing better natural ventilation and daylight. The project was completed over a summer holiday period on budget and a week ahead of schedule.

1 6th form break out space. Glazed vision panels were introduced to make the space more transparent

2 Curved bookcases with integrated seating and lighting bridges

3 Library study desks with pull out rechargeable central charging docks for ipads and other devices

4 Alternative seating areas including the 'Hive' bookcase where 3 or 4 girls can congregate

5 Central Librarian's desk with the 6th form break out space through the glass doors to the right



1



2



3



4



5

CLIFTON COLLEGE



1

Big School is the name given to one of the first buildings to be built at the College in the 1860's incorporating classrooms on the ground floor with a triple height refectory on the upper floor. In the 1950's a second floor was added creating 2 dining halls. The upper dining hall is still an impressive space with feature roof trusses with staff common rooms now occupying the ground floor. It is grade 2 listed and sits in the Clifton Conservation area.

1 Big School (on the left) is part of an impressive array of fine Victorian buildings.

2 The main Upper Dining Room was refurbished incorporating new services, lighting, furniture & finishes and extensive repairs. Kitchens were completely renewed and a new lift was installed.

3 A total of 15,000 welsh slates were used in the project including alternating bands of hexagonal shaped Penhryn Heather Blue slates and rectangular Cwt y Bugail slates. Chimney repairs were also undertaken. Welsh slate was selected as a requirement of the listed building consent. Feature dormers were overhauled for ventilation.

4 The imposing refectory building facing the College's playing fields, now has a beautiful and dramatic roof once again. The roof had not been replaced since it was built over 150 years ago.

5 The contract value was £2.7m and undertaken as a Design build contract with local contractor Kitto construction.

6 Sound absorbing panels were carefully inserted between roof trusses to greatly improve the acoustics of the upper dining hall.



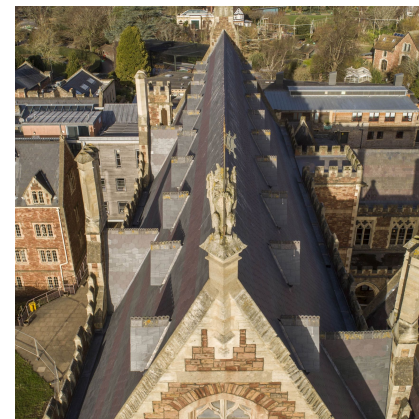
2



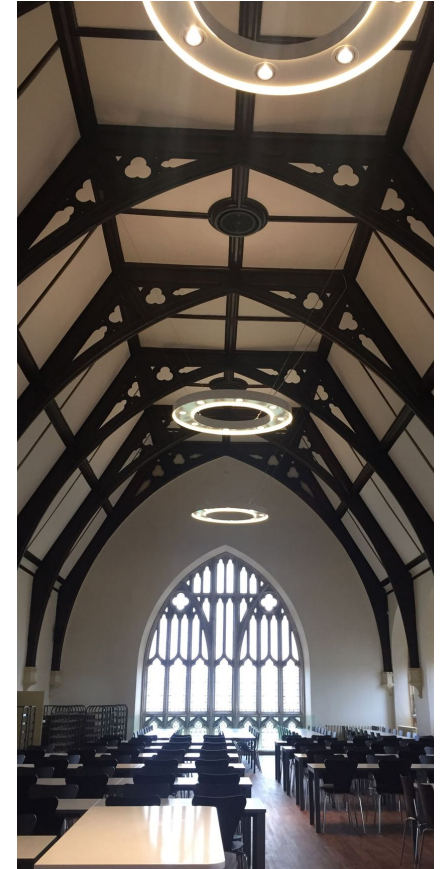
3



4



5



6



1

Working closely with the conservation officer we carried out the £500,000 refurbishment of the library and brought it into the 21st century by integrating computer rooms and other facilities into the Victorian Gothic structure.

1 The Clifton campus includes a number of fine Victorian buildings.

2 The bookcases were restored and French polished and were adapted to form low level archive space and glazed lockable display cabinets at high level. New heating, lighting, power, data and fire alarms were carefully introduced with minimal disruption to the original interior.

3 The roof structure was enhanced with new lighting.

4 New desks in the alcoves were designed with new lighting and data links.

5 A bay overlooking the main quadrangle provides a relaxing space for reading newspapers and periodicals.

6 In the ICT classroom, a mezzanine floor was introduced to create additional computer workstations.



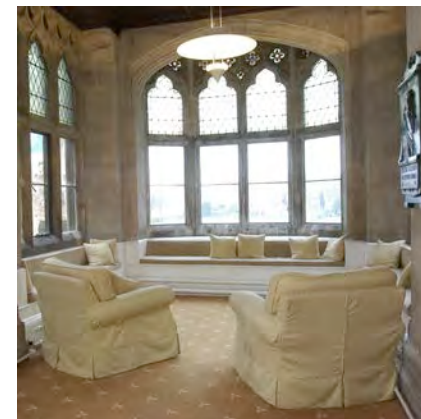
2



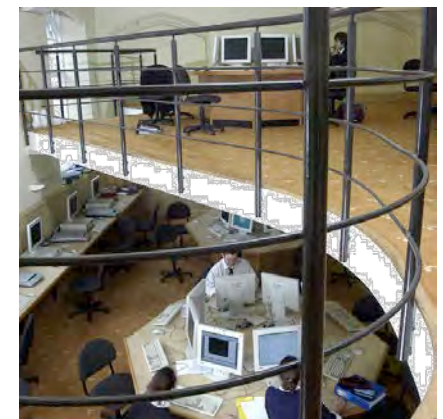
3



4



5



6

CLIFTON COLLEGE NEW DAY HOUSES (1 THE AVENUE)

In 2014 we carried out a project for a new building containing two day houses for Clifton College Preparatory school. They replaced two small and ugly 1970's houses which were seen as negative buildings within the conservation area. The four storey building incorporates changing rooms in the basement and a dance studio on the second floor with common rooms and prep rooms on intermediate floors. The building was completed as a design build contract on time and budget. The building won a Clifton and Hotwells Improvement society award in 2015.

- 1 Computer generated model of proposals for planning
- 2 The entrance off the Avenue showing the banding of Bath stone contrasting against pennant coursed rubble stone.
- 3 Fleur de Lys Clifton Emblem adorning the parapet over one of the entrance wings.
- 4 Steep pitched natural slate roofs and local stone compliment the Clifton conservation area with its abundant Victorian villas.
- 5 Stone bays pick up detailing from surrounding buildings in the conservation area.
- 6 Large Victorian style floor to floor levels allow for high ceilings to internal common room areas
- 7 Completed building from Guthrie Road



1



2



3



4



5



6



7



NBW were commissioned by the governors to refurbish two large boarding houses to a very tight programme. Although external changes were minimal, the phasing of the work was critical to the success of the project and was worked out in extreme detail.

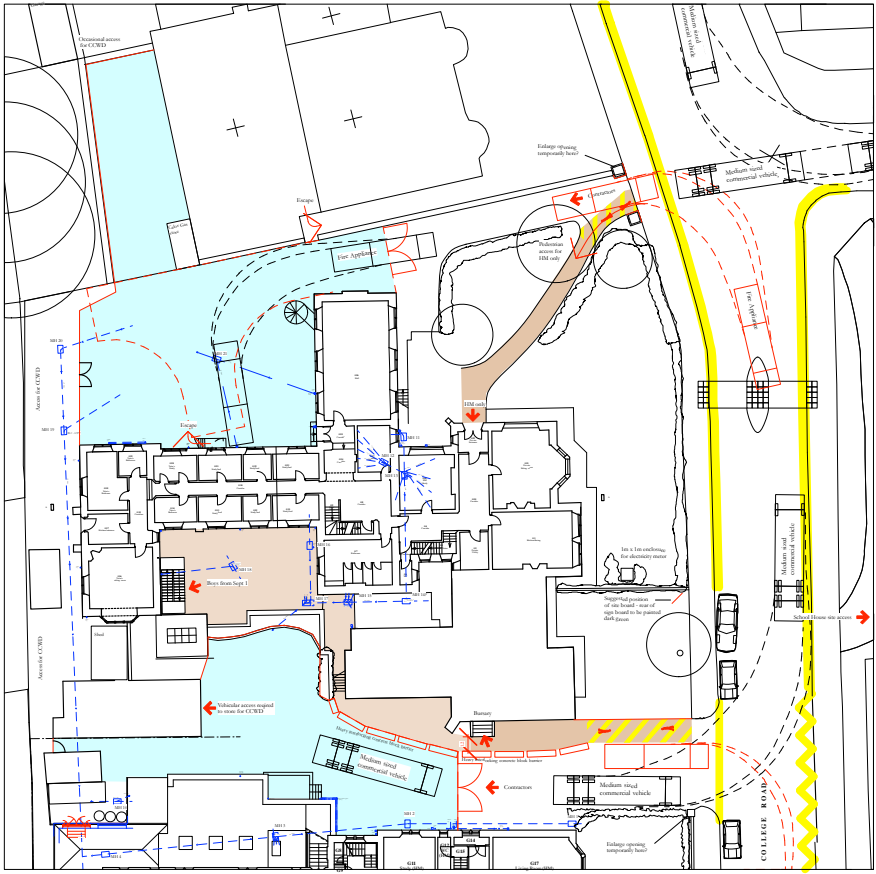
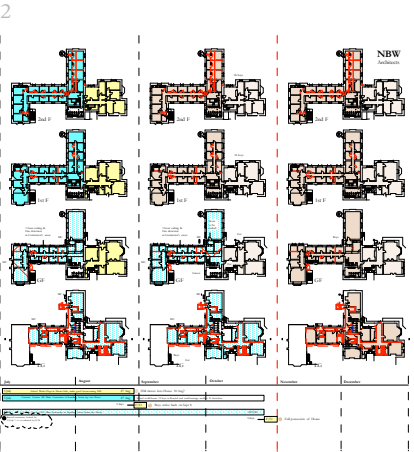
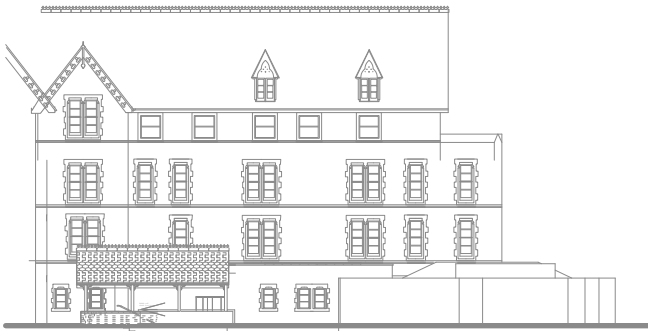
On such a restricted city site, surrounded by dense population, site access and health and safety concerns were paramount.

1 The Clifton campus includes a number of fine Victorian buildings.

2, 3 A new entrance to Watson's was the only external addition.

4 The phasing plan for Moberly's co-ordinated the work of the main contractor and the school works department, concentrating noisy work during vacations and allowing the maximum use of the building for accommodation during the contract period.

5 The external areas around the buildings were carefully controlled to allow access for the contractor and school staff while maintaining safe routes for pedestrians.

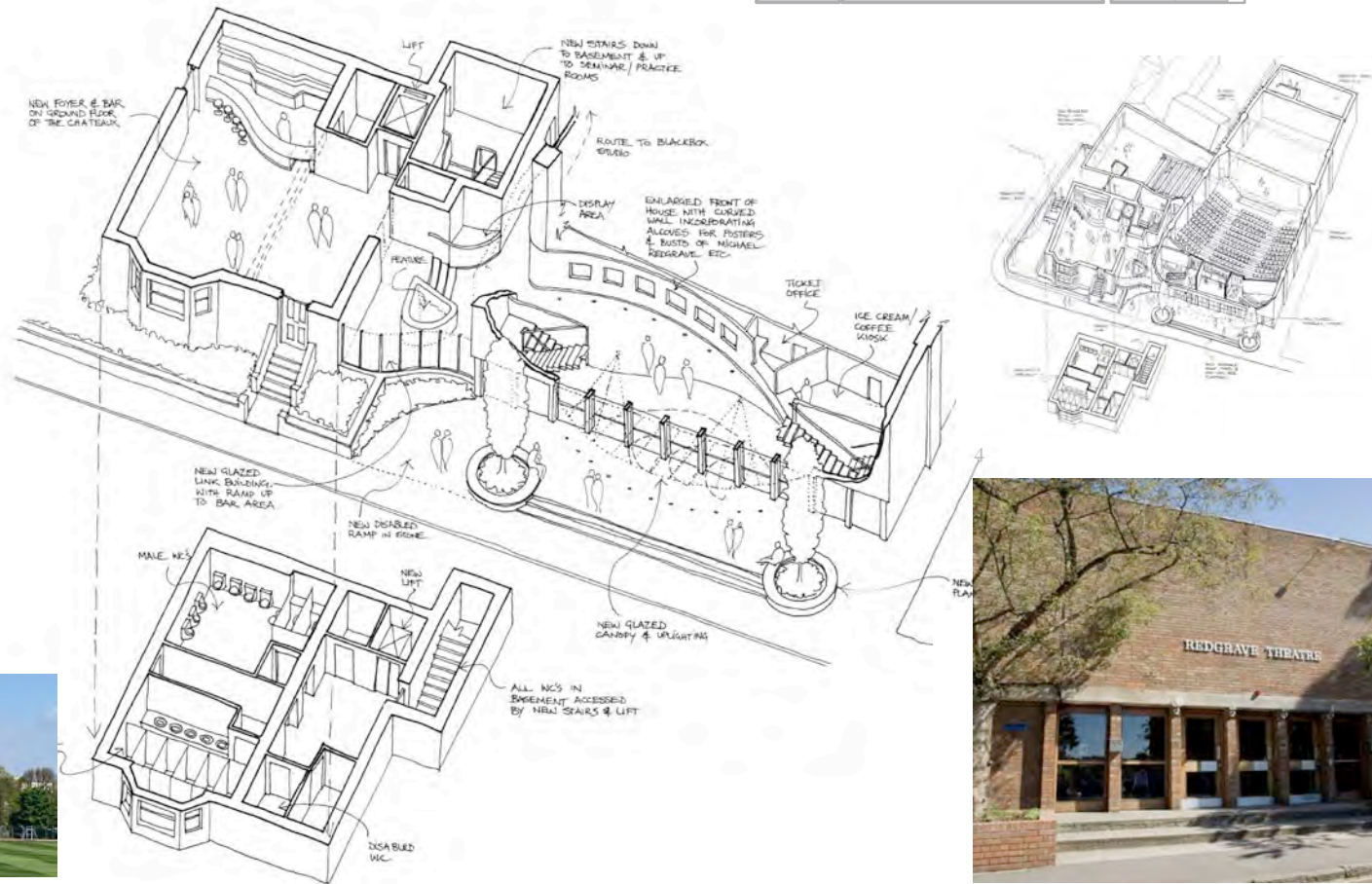
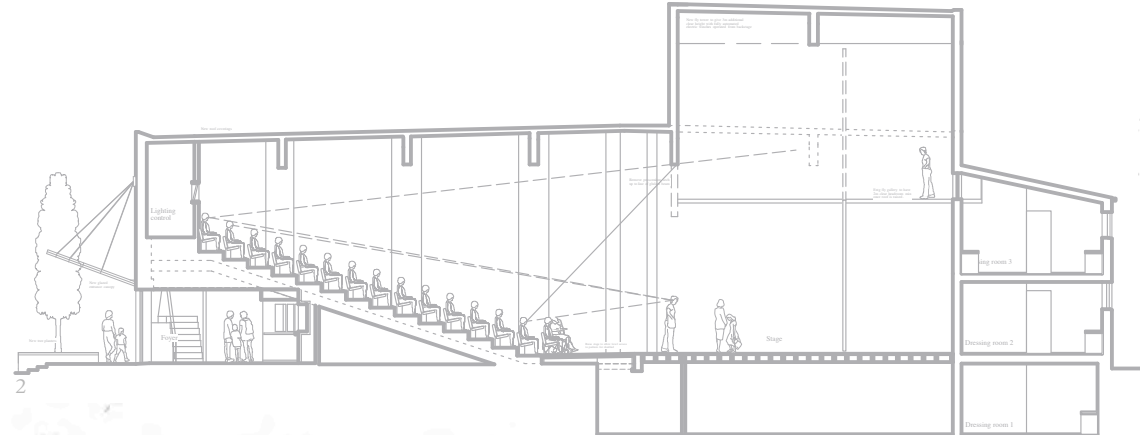


CLIFTON COLLEGE REDGRAVE THEATRE

NICHOLS | BROWN | WEBBER ARCHITECTS & LANDSCAPE PLANNERS

We were asked to look at a feasibility study for extending and upgrading the existing 1950's theatre to provide improved front and rear of house facilities

- 1 The Clifton campus includes a number of fine Victorian buildings.
- 2 Proposed section through the auditorium and fly tower.
- 3 Proposed 3D view of the new foyer with extended bar and WC facilities into an adjacent property owned by the College.
- 4 Proposed 3d view of the auditorium and front of house .
- 5 The existing 1950's frontage.





1

We undertook the refurbishment of the Victorian Science Block.

The scheme was completed as a design build contract in 14 weeks.

1 The original Science Block which can be seen to the right of the chapel won an architectural design award in its day.

2 The stunning set of Victorian buildings face onto the playing fields known as The Close.

3 The original entrance from the Close had been used as a workshop for many years was refurbished as a computer area.

4 One of the Chemistry laboratories. The original timber worktops were reused and turned over and fully restored. New fume cupboards were installed throughout.

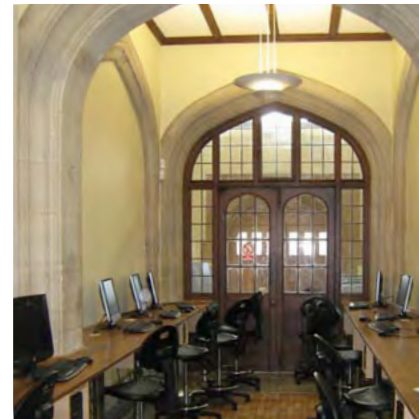
5 The main Physics corridor fully restored with its fine terrazzo floor finish.

6 A total of 14 Laboratories were totally refitted.

7 In it's day the science building won an architectural design competition. The existing facade remains as it was in the early 1900's but with windows carefully overhauled.



2



3



4



5



6



7



We have worked with Clifton College since 2001. During this period we have designed and managed the refurbishment of the Percival Library, the refurbishment of 3 boarding houses. We also designed the extension and refurbishment of the music school. The scheme includes a recital room, 2 classrooms, a recording studio and 17 practice rooms. The project was completed in 2009.

1,2 View of the Percival Library and Chapel from across the Close.

3 Opening day in the refurbished performance space.

4 Planning drawing of the Guthrie Road elevation.

5,6 The Guthrie Road entrance and facade.

7 One of the practice rooms in the new extension



4



1



2



3



5



6



7

Elstree School is set in 150 acres of stunning parkland in rural West Berkshire with a Grade II* listed Georgian mansion at its heart. The School is an independent preparatory school for boys aged 7 - 13 years.

This building project incorporates 2 large science laboratories, 2 new classrooms and changing facilities accessed off a large top lit hallway.

The contract was let as a design and build contract.

- 1 Completed building from the South
- 2 The science block with the listed building in the background.
- 3 Planning drawings of the main elevation facing open parkland.



2



3



1

3

6



We have been working at this boys' preparatory school since 2001 and have undertaken a master plan for the whole site. This included designs for new classrooms, staff common rooms, the art department, a theatre and staff flats.

In 2006 we completed a large sports hall (illustrated) and changing rooms on the banks of the River Thames. The sensitivity of the site which lies in an area of outstanding natural beauty and which adjoins the Thames floodplain, required an outstanding design and attention to the setting.

1 NBW planning drawing of the scheme viewed from the Ridgeway footpath.

2 This building won a Chilterns Building Design award in 2008.

3 Interior of the main hall. The hall is naturally ventilated by passive stack roof vents.

4 The completed building from the River Thames.

5 The gallery of the new sports hall overlooks the river and is constructed of western red cedar and teak from renewable sources.

6 Cutaway drawing showing the various components of the sports hall.





1

Following the successful completion of the new sports hall (image 2) elsewhere on the site, the existing gymnasium (image 3) became vacant. It was decided to convert it to a small theatre to house about 138 people. Old changing rooms were converted to Green rooms.

1 Section through the theatre indicating proposals for natural Passive Stack Ventilation.

2 The school is set on the banks of the river Thames in an Edwardian building. The sports hall looks over the river.

3 The existing steel framed building was very basic and resembled an agricultural building.

4 After completion showing the retractable seating in the process of being set up. Individual seats were specified for comfort rather than greater capacity bench type seating.

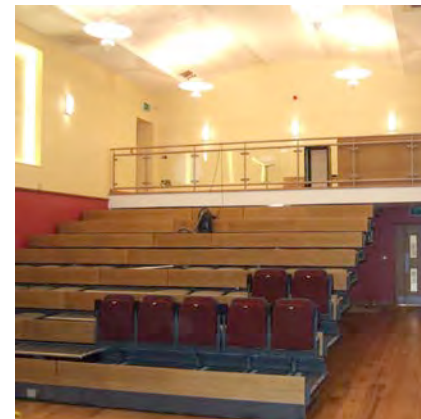
5 Completed building during fit out of stage equipment showing the installation of the lighting gantry on a motorised lowering device.



2



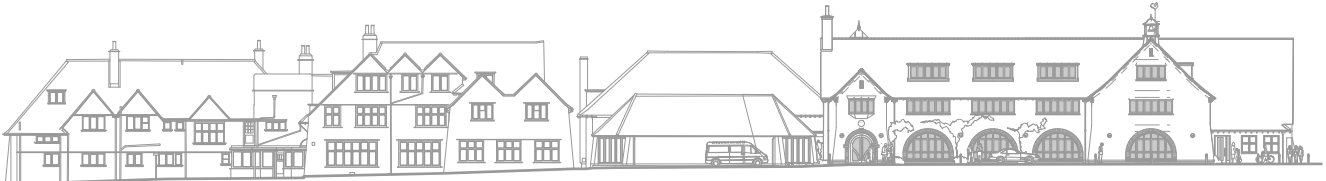
3



4



5



3

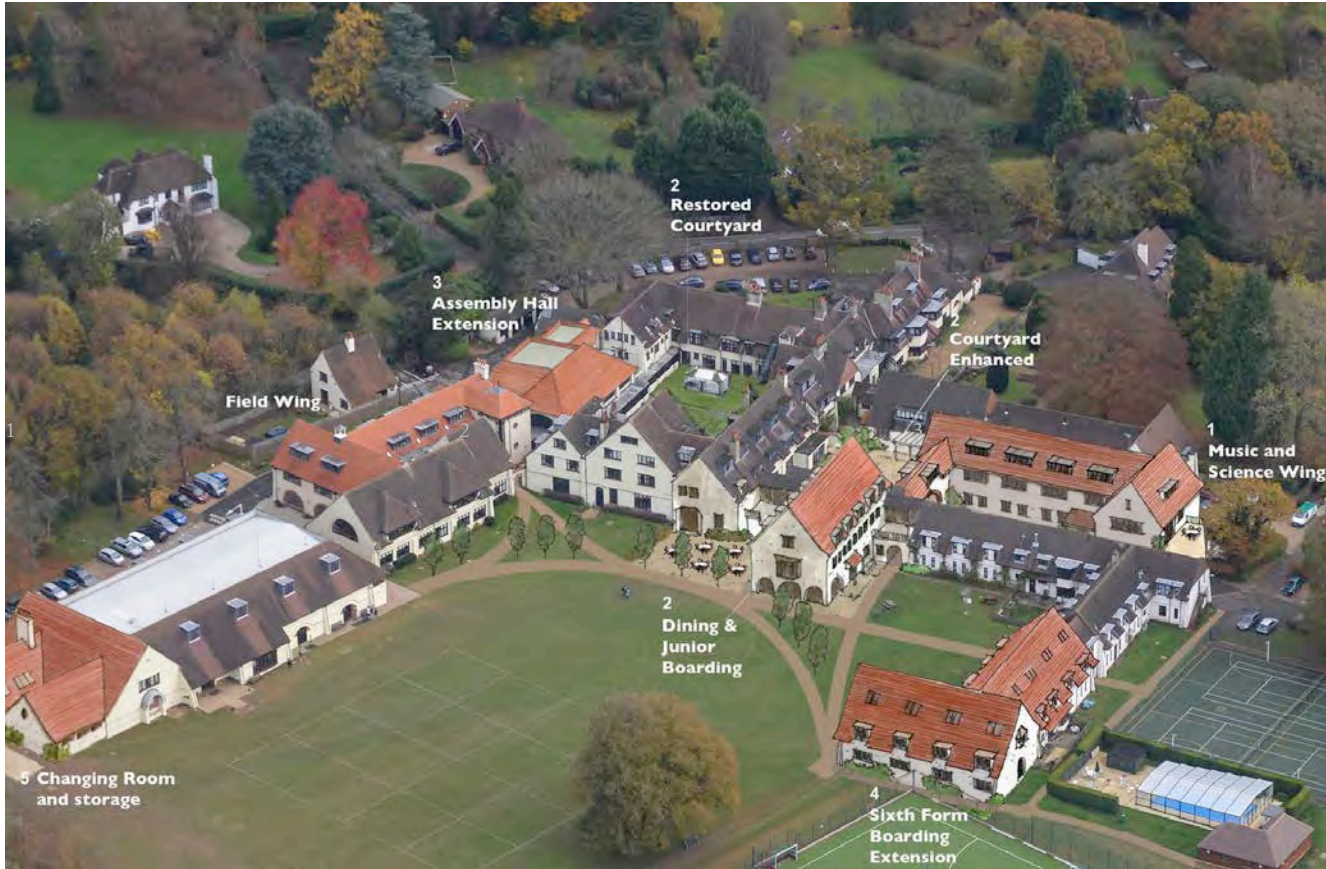
The Prior's Field school buildings are centred on a Grade II Listed Arts and Crafts house by C.A.Voysey built c.1900. Most of the subsequent buildings have been constructed in the Arts and Craft style. This new building replaces a 1960's single storey building and houses art & design, modern language classrooms, and ICT suites.

The Arts and Crafts detailing of Field Wing (image 1) helps it to blend into it's setting. The planning drawings (image 3) show the elevation facing the main driveway.

Field Wing is the first phase of a masterplan to take the school forward for the next 10 years (see image 2). We have since completed the Music and Science wing.



1



2



NBW negotiated approval for a five-phase masterplan with Guildford Borough Council. The first phase comprised a new music school, eight laboratories, five classrooms and three offices. The project included a new extension on three floors that replaced a 1960's single storey building, and the extension and re-planning of an existing two-storey science building.

The elevations (1) are intended to be sympathetic to the existing buildings and in particular to the adjacent Grade II Prior's Garth house by CFA Voysey (1900). Prior's Garth can be seen on the right of the the new building in (2). Image (3) shows the windows of the new second floor labs looking out over the Rose Garden. In image (4) the south porch can be seen supported by 350mm diameter green oak columns. These were turned to a profile derived from Voysey's work. The ground floor layout with the recital room, with its arched window is shown in (5). The recital room (6) seats an audience of 80. The new labs (7) are very well equipped and typically accomodate 24 pupils.



We helped this highly successful Grammar school to realise its five year plan to build three projects including a new Fitness Centre and Changing rooms, a Maths and 6th Form Centre and a Boarding House.

The projects incorporate extensive sustainable and renewable energy features such as wood chip boilers, combined heat and power units, solar power and rain water harvesting.

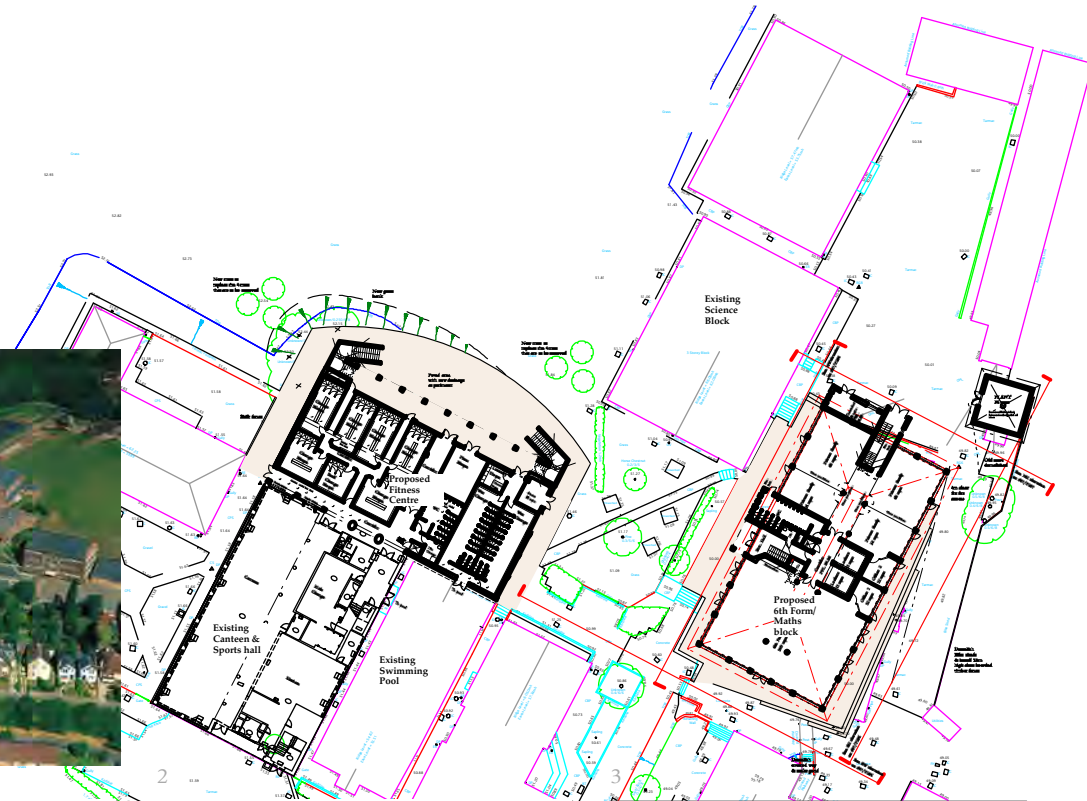
1 Aerial photograph of the site.

2 Site plan of the proposals.

3 Visual of the new Fitness Centre attached to the existing sports complex.

4 Visual of the proposed boarding house.

5 Visual of the new Maths and 6th form centre.



We have completed a new sports hall for Rye St Antony, a girls school in Oxford. The site was a green field site in a conservation area with a difficult planning history.

We successfully negotiated a planning permission. The project was completed as a design build contract and we were novated as designers to work with Feltham Construction of Newbury for the construction phase.

The scheme was completed one month early and on budget.

1 A 3D computer simulation as submitted with the Planning application.

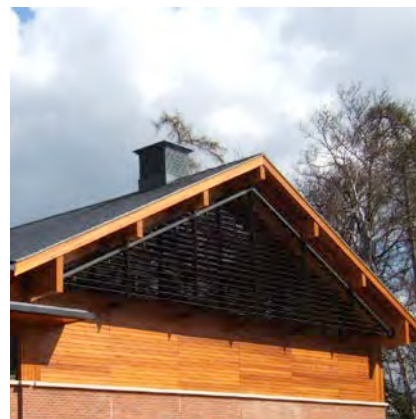
2 The completed building from the West showing the Brise soleil (solar shading) and passive stack ventilators.

3 The main hall relies totally on natural ventilation. Hot water to changing rooms is provided by solar thermal panels.

4 The completed building. Sustainable products such as natural slate, western red cedar cladding and clay bricks were used extensively. The building was opened by Pippa Wilson Olympic Gold medalist. (sailing - yngling class)



1



2



3



4



3

1 We were initially asked to carry out a feasibility study on four listed boarding houses and to assign priorities. The report made comparisons with provisions at other schools and against DfES criteria.

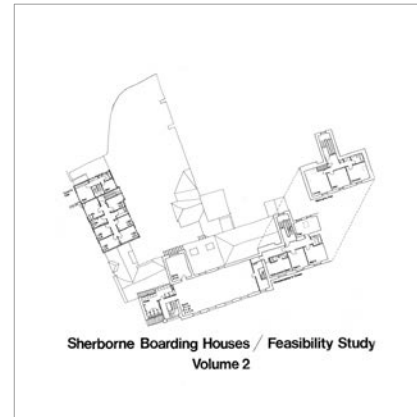
2 The initial report led to more detailed studies on two of the boarding houses which resulted in cost plans.

3 Harper House was the top priority and was completely refurbished. An extension was added (at left of drawing) to provide additional accommodation.

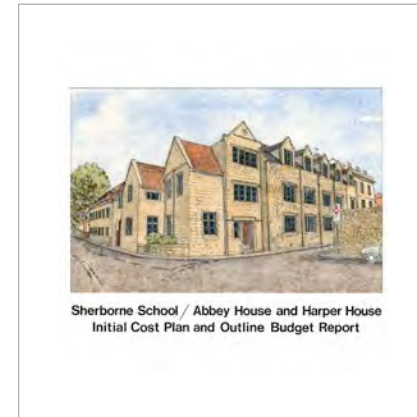
4 Abbeylands required no extension and work was carried out by the School Works Department.

5, 6 Abbey House required extensive refurbishment and the addition of a new bedroom block (5), constructed in Ham stone to fit in with the streetscape.

7 The Green was considered to be too expensive to alter for the needs of a new boarding house. NBW negotiated planning and listed building consents for conversion into ten houses and flats.



1



2



4



7



6



5



5

Greenhill was one of four boarding houses which were extended and refurbished. All the houses which were in the historic core of Sherborne were constructed in Ham stone and were listed grade II or II*.

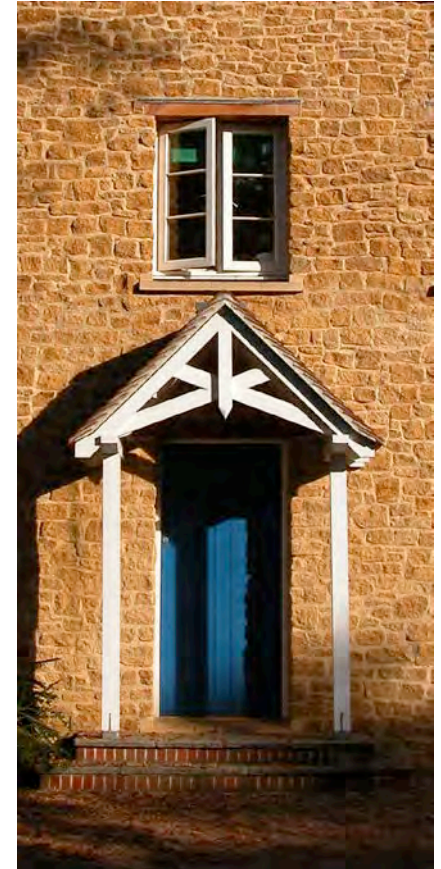
- 1 A large holm oak tree was preserved at the centre of a new open space created by stepping the new buildings back from the road.
- 2 A door at Greenhill set in a wall of Ham stone.
- 3 The new facades echo the materials of their setting.
- 4,5 NBW drawings used for planning and listed building consents



4



3



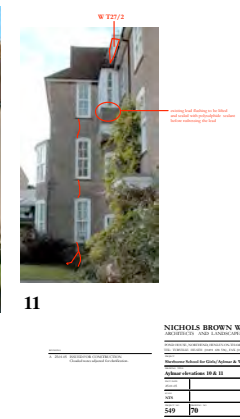
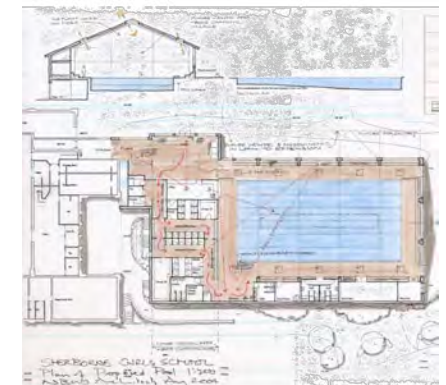
2



1

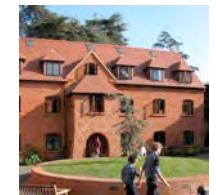
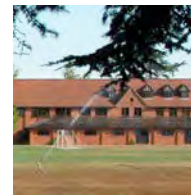
At Sherborne School for Girls we have carried out a masterplanning exercise, a feasibility study for a new swimming pool and two boarding house refurbishments.

- 1 The masterplan identified areas of the school which would benefit from development and a spreadsheet quantified the future requirements of the school and set these against approximate costs.
- 2 As part of the swimming pool feasibility study we produced a vision for an integrated sports and performing arts complex.
- 3 The pool feasibility study drew on the experience of other school pools and set down the broad elements of the the design which were costed.
- 4 A single new boarding house was created out of two existing houses.
- 5 NBW construction drawings draw on digital technology for speed and effective communication.



Since 1983 we have been masterplanners at Shiplake College. New development has been concentrated in the old walled garden area and has used building forms, materials and landscaping to bring order and harmony to this delightful setting. We have completed the following projects (numbers from bird's eye view):

- 1 Jubilee Building: ten staff bedsits and school tuck shop.
- 2 Burr House: extension and refurbishment of a boarding house including bed studies, changing rooms and classrooms. The extension trebled the size of the house.
- 3 Welsh House: extension and refurbishment of existing boarding house.
- 4 Everett House: extension of an existing boarding house. Incorporation of new offices for the headmaster, bursar and administration staff. This project was particularly challenging because it involved removing and replacing the roof and carrying out the construction works while the building was occupied.
- 5 Science Design & Technology Building: new classrooms, laboratories and workshops for physics, maths, computing, graphics and technology.
- 5a Humanities Centre: extension of the existing science block to provide a new humanities centre with 8 classrooms.
- 6, 7, 14 & 16 Staff Housing: in addition to the ten bedsits for catering staff, we have completed four new staff houses and refurbished and extended the houses for the headmaster and second master.
- 10 Art School: refurbishment and extension of a system built classroom to create art studios and a gallery.
- 12 Sports Pavilion/Orchard House: this building provides four changing rooms, function rooms and a day boy house.
- 15 6th Form House: new sixty bedroom mixed boarding house.



Burr House was once a farmhouse on the estate and it was extended in the sixties in a particularly sixties style (1). When the boarding house was refurbished it was decided to more than double it in size and the pictures (2, 3) show how it evolved.

The NBW design drawings (4, 5) show how the elevations were planned to compliment the old farmhouse with academic functions taking place behind brick and flint walls and changing rooms and lavatories etc being clad in weatherboarding more reminiscent of the original farmyard.

The North side of the building was swept down to minimise overshadowing and give a gentle presence on the main school drive (6) and below this roof, space was found for the House Tutor's flat with its own discreet front door (7).

The new front door had a foundation stone set above it (8) and this was where the house was opened by the then Minister of Education, Sir Keith Joseph.

We designed the fittings for the house with expert assistance from Mrs Lapping, the Headmaster's wife. Every cubic inch was used (9).



1



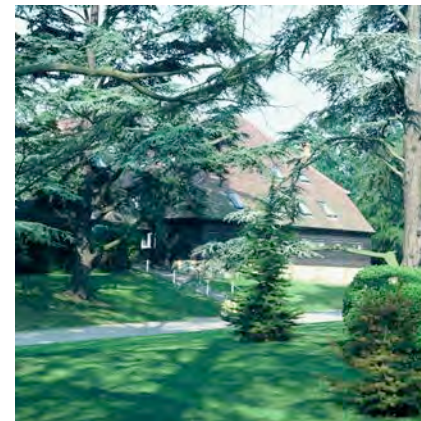
2



3



4



6



7



5



8



9

The old view from the public road was likened by the then headmaster to that of a munitions factory (1) and so when we were looking for a substantial site for a new building, the Planners were happy to allow us to extend the developed core slightly in return for an improved view. The College also acquired a facade that made it look more like a seat of learning (2). The frontage was finally completed with the pavilion on the left of the picture.

As well as the main teaching floors on ground and first, the building also has a second floor in the roof for staff accommodation and storage.

3, 4 Access to the upper classrooms is from covered decks, facing south which act as a framework for climbing plants.

5 The new buildings make a fitting backdrop to events on the sports field.



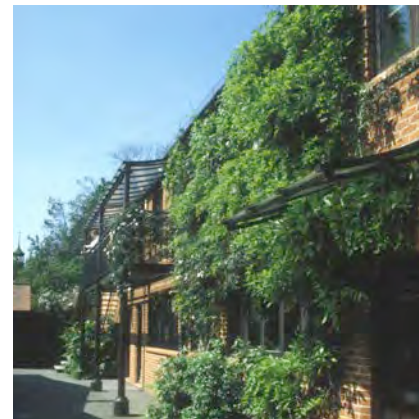
1



2



3



4



5

Everett House was built in the 1950's to provide boarding accommodation next to the listed mansion which was the main building of the College. Although it occupied a fine site, it was never a very beautiful building (1).

NBW were asked to upgrade the boarding house and to provide offices for the headmaster and bursar and their staff.

The original building was given a new roof with accommodation within it which allowed it too fit more easily into its historic setting (2).

The sequence of photographs (3 ,4, 5)shows the before, during and after views. The lower floors were occupied throughout the works.

A new door for the boarding house was made to the side of the house (5) so that a more formal entrance could give access to the headmaster's offices. He has one window to the left of the front door so that he can keep an eye on the comings and goings in the school, and another window which looks out across a formal garden to the glorious Thames Valley. Prospective parents wait in an office adjoining to his where they too can enjoy this view and peruse cuttings about the school.

The house now forms a fitting neighbour for the distinguished old building (6).

Campus view from the south with the listed Skipwith House in the foreground (7)



7



1



2



6



3



4



5



With the need to concentrate development at the College, the new Humanities building was built over the old science block .

Foundations were excavated and poured during the Easter vacation and the steel frame and the shell of the first floor constructed during the summer vacation and the first four weeks of the Autumn term. After that the school had use of the laboratories below while the fitting out of the classrooms continued above.

1 NBW's concept sketch showed how the new building would fit neatly next to the recently completed Science, Design and Technology building shown on the left.

2 The frame goes up over the old science block.

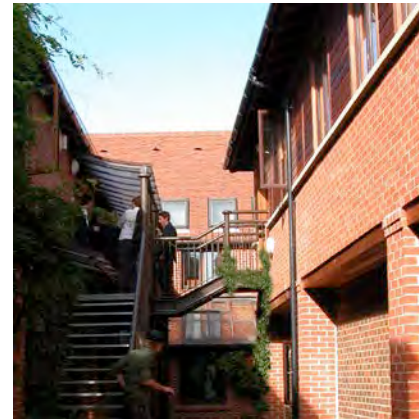
3 Bridges span the narrow lane between the new Humanities building on the right and the existing buildings.

4 Planting along the main drive of the school acts to reduce the bulk of the building and to smooth its connection with the neighbouring buildings.

5 The internal corridor allows abundant natural light to flow in from above.



2



3



4



5



2

When it came to designing a new sixth form house for Shiplake College, the headmaster was keen to create a collegiate atmosphere based around a quadrangle. The site contained a single storey building which had to be retained and this was given a new floor and roof during the redevelopment. The roof had to be clad in slate and weatherboarding because of loading requirements.

The new building is three storeys high with accommodation for sixty girls and boys and was designed to match the earlier sports pavilion and Orchard House which is seen on the left in the plans and photographs.

1 A quadrangle was formed using the sports hall at the bottom of the plan as the fourth side.

2 The buildings were designed to shelter the space and to follow the design principles used in other parts of the College.

3, 4 The space has sun, grass and a sitting wall and is a good place to meet and pass the time.

5 The junction between the existing building and the new provides an arched link to the outside.



1



3



5



4

In 2010 Shiplake College built a new boarding house for twenty girls. The new house has views out over the playing fields and is linked to staff accommodation in the adjacent Orchard House. It completes the development of this edge of the campus which started with the Goodwin Building (science, design and technology) in 1990, followed by the sports pavilion and Orchard House in 1995.

- 1 Buildings shown toned have been designed by NBW and the Girls boarding house occupies the space numbered 15 in the top right hand corner.
- 2 The new building completed the frontage started by the Goodwin building on the right hand side of the picture.
- 3 The new facade fits in with Orchard House, its immediate neighbour.
- 4, 5 The stair tower picks up the distinctive brickwork patterns found around the campus known as diaper brickwork.



1



2



3



4



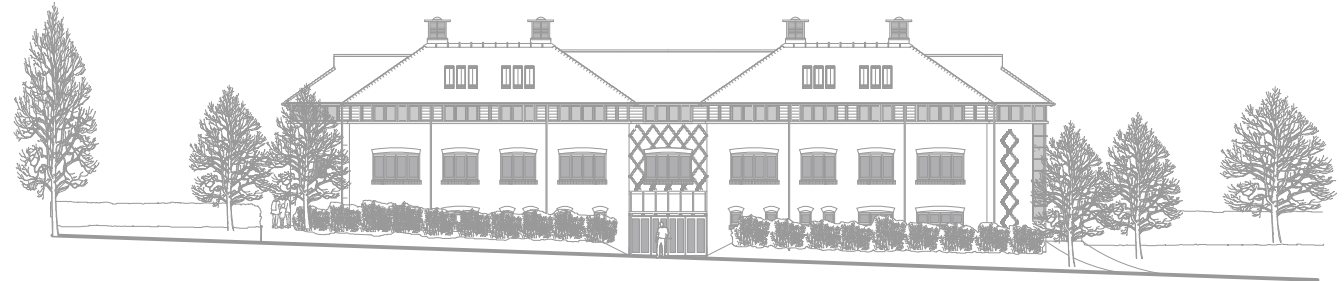
5

Shiplake College completed their latest and largest building project to date with the construction of this Art Music and Resource Centre. Planning restrictions on height meant that the three storey building had be partially sunk into the ground. The semi basement houses a state of the art music department with the library and learning support departments on the middle floor. Art and Ceramics occupy the top floor below large vaulted ceilings with exposed douglas fir trusses and top light. The building achieved a BREEAM 'excellent' target.

1. Planning drawings of the main elevation fronting the main driveway.

2. The building nestles into the landscape and patterned brickwork picks up detailing from the adjacent listed building. The building achieved a Commended Award from the Chilterns Society in 2017.

3 One of three large art classrooms with exposed douglas fir roof trusses.



1



2



3

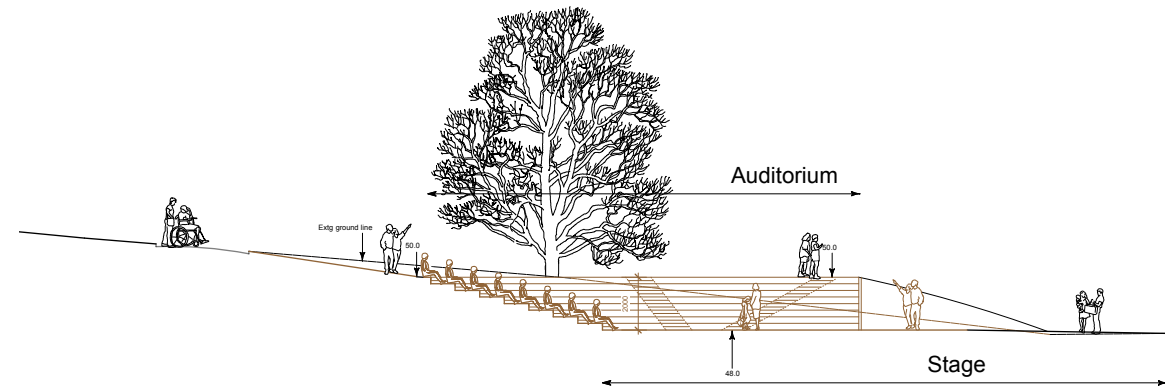
We have recently secured Planning permission for a Greek Theatre at Shiplake College overlooking the banks of the River Thames.

The site was in the curtilage of the Grade II listed Skipwith House, an impressive Victorian Gothic structure dating from 1890. Planning permission was granted for the open air theatre on the basis that this was a 'Folly' in the grounds of the main house.

The theatre will be used for drama performances as well as an open air classroom during good weather.

1. Planning drawing showing a site section

2,3. Computer generated images of the theatre with the main house in the background.



1



2



3



5

We were asked to put forward proposals for a new 6th form centre for this thriving inner city academy. The brief was to provide teaching and common room facilities which amounted to over 2,400sqm of floor area. The building was designed around natural ventilation principles.

1,2,3,4 Computer generated model of proposals to support the competition entry.

5. Streetscene elevation.



1



2



3



4



5

Bletchington Primary School planned to relocate from its existing inadequate Victorian building to a purpose built building on a green field site and NBW were involved in the early feasibility stages of the project.

1 The site, which is one hectare in area, is on the edge of the village and is owned by the Duchy of Cornwall who kindly agreed to lease the land.

2 The plan of the building formed a three sided sheltered courtyard with classrooms wrapped around a central playground. The hall doubled as the Village Hall and the building is to be used for community use and wrap around care.

3 The site, which is 6 miles north of Oxford, will have far reaching views over farmland.

4 The design of the buildings is sympathetic to the local area using Cotswold stone walling and Cotswold Cardinal slates on the roof. A glazed lean to roof shelters the children as they pass between their classrooms and other spaces.

5 Nesting boxes in the gables of the building will be provided to attract swifts.



4



1



2



3





3

We were asked by St Piran's School, a girls' & boys' preparatory school near Maidenhead, to look at a master plan for the next 10 years.

The proposals received planning approval and included a new lower school to replace the existing portacabins, a multi purpose hall, 12 new classrooms and a Design Technology and Computer centre.

1 Aerial view of the school and its grounds showing the enviable amount of space that the school has for sport. The school has a full programme of teaching, from Nursery level to year 8. Like all campuses there is a wide variety of buildings with different ages, conditions and uses that need to be managed.

2 The masterplan looked at the whole site.

3 The new accommodation was concentrated in the central area to comply with planning restrictions and to preserve the open quality of the site.



1



2



4

We were asked by Gayhurst School near Gerrards Cross to look at a feasibility study to rationalise all the school buildings and to re-organise the car parking and drop off arrangements.

The main principles of these radical proposals were adopted and the scheme was completed as a design build contract.

1 Aerial view of the site

2 An early version of the proposed site layout.

3 Elevations of the new buildings proposed were designed to blend with the best of the school's existing buildings.

4 The as built version.

5,6 The nursery was built as the final phase along with a reconfigured Junior school.



1



2



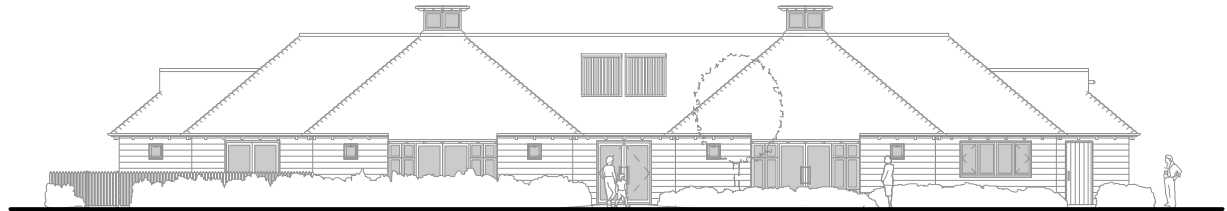
5



3



6



We were asked by Gayhurst School near Gerrards Cross to design a new nursery and new art department. The redesign of the Junior school was undertaken at the same time.

The scheme was completed as a design build contract.

1 The planning drawings showing the Entrance elevation from the south.

2 The new building was designed to blend in with the rest of the school's existing buildings but is intended to be low key and to be welcoming to young children.

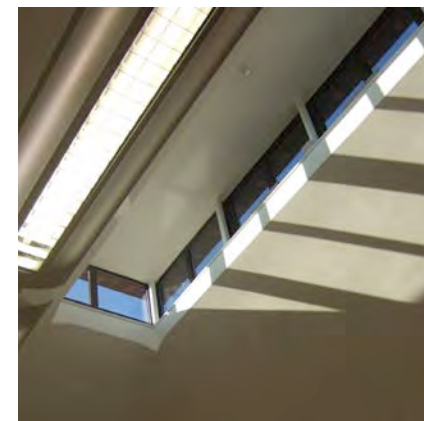
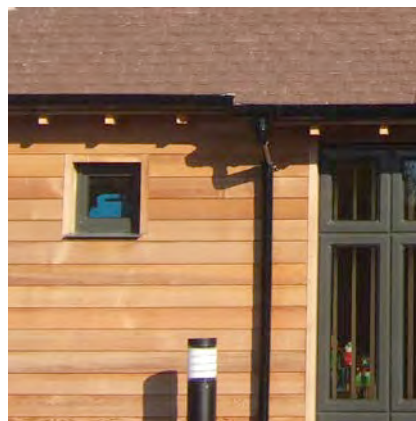
3 The building sits adjacent to the all weather pitch which is screened from the main buildings by low level planting.

4 The roofs are stepped back to reduce the bulk of the building.

5 Sustainable materials such as clay plain tiles and cedar weatherboarding were used.

6 High level lanterns provide daylight and ventilation into the main nursery and art classroom.

7 The rear elevation facing the all weather pitch and play area.



5

6

7



NBW won a limited competition to design seven language classrooms, an IT centre and a sixth form study area to be set within a new masterplan for the school (1).

The resulting £1.2m building (2) will be one phase in a continuing development plan that will add further classrooms, workshops, dining and staff facilities.

The completed building won a Salisbury Civic Society design award.

The school sits in the shadow of Salisbury Cathedral (3) and is bordered by a number of historic buildings (4). The negotiation of the planning permission was a complex procedure. We were joined in the negotiation by English Heritage, the conservation officer, the Cathedral's Fabric Commission for England, the Dean and Chapter of Salisbury Cathedral, the Salisbury Conservation Area Advisory Committee, Salisbury Diocesan Board of Education and the Wiltshire County Council Heritage Department.

Sketches from the competition winning entry (5 & 6).

